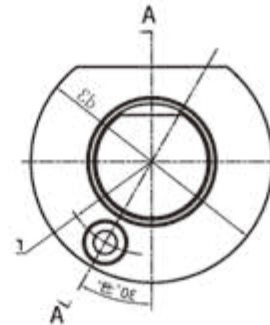
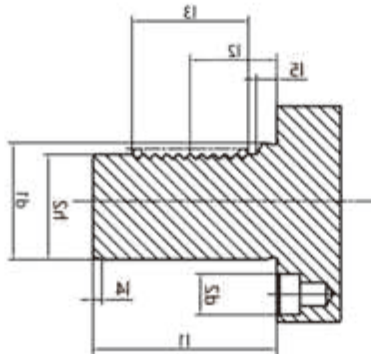




**VDI
TOOLING SYSTEM**

VDI Taper Standard
VDI 锥柄标准

DIN 69880



d1 H6	h1 max	d2	d3	h2 ±0.1	r ±0.02	l1 max	l2 ±0.05	l3 min	l4 max	l5
16	12	8	40	15.0	14.5	32	12.7	16	2	3.5
20	16	10	50	18.0	18.0	40	21.7	24	2	7.0
25	16	10	58	23.5	21.0	48	21.7	24	2	7.0
30	20	14	68	27.0	25.0	55	29.7	40	2	7.0
40	25	14	83	36.0	32.0	63	29.7	40	3	7.0
50	32	16	98	45.0	37.0	78	35.7	48	3	8.0
60	32	16	123	55	48	94	43.7	56	4	10
80	40	20	158	72	65	124	49.7	80	4	10

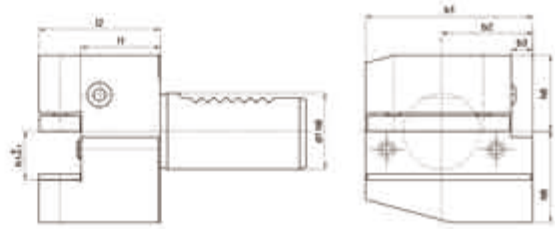
VDI TOOLING SYSTEM VDI 工具系统

Radial Holder Form B1	01
短型横向右刀夹	01
Radial Holder Form B2	02
短型横向左刀夹	02
Radial Holder Form B3	03
短型横向反切右刀夹	03
Radial Holder Form B4	04
短型横向反切左刀夹	04
Radial Holder Form B5	05
长型横向右刀夹	05
Radial Holder Form B6	06
长型横向左刀夹	06
Radial Holder Form B7	07
长型横向反切右刀夹	07
Radial Holder Form B8	08
长型横向反切左刀夹	08
Axial Holder Form C1	09
纵向右刀夹	09
Axial Holder Form C2	10
纵向左刀夹	10
Axial Holder Form C3	11
纵向反切右刀夹	11
Axial Holder Form C4	12
纵向反切左刀夹	12
Rectangular Holder Form D1	13
多座刀夹	13
Rectangular Holder Form D2	14
多座反切刀夹	14
Boring Holder Form E1	15-17
可转位浅孔钻刀夹	15-17
Boring Holder Form E2	18-23
镗孔刀夹	18-23
OZ Collet Chuck Form E3	24
OZ 刀柄	24
ER Collet Chuck Form E4	25
ER 刀柄	25
Morse Taper Adapter Form F	26
带扁尾莫氏刀柄	26
Rectangular Blank Form A1	27
方形基础柄	27
Round Blank Form	28
圆形基础柄	28
Cuting Off Tool Holder Right Height Adjustable	29
短型横向切刀右刀夹	29
Cuting Off Tool Holder Left Height Adjustable	30
短型横向切刀左刀夹	30
Cuting Off Tool Holder Inverted Right Height Adjustable	31
短型横向切刀反切右刀夹	31
Cuting Off Tool Holder Inverted Left Height Adjustable	32
短型横向切刀反切左刀夹	32
Quick Change Tapping Chuck with Length Compensation	33
弹性快换攻丝刀柄	33
Protection Plug Form Z2	34
保护塞	34

VDI COOLANT TOOLING SYSTEM VDI COOLANT 工具系统

B1A Radial, Coolant	35
短型横向右刀夹, 内冷型	35
B2A Radial, Coolant	36
短型横向左刀夹, 内冷型	36
B3A Radial, Short, Coolant	37
短型横向反切右刀夹, 内冷型	37
B4A Radial, Short, Coolant	38
短型横向反切左刀夹, 内冷型	38
B1B4A Radial, Coolant	39
短型横向右(反切左)刀夹, 内冷型	39
B1B4AK Coolant, Wedge Clamping	40
短型横向右(反切左)刀夹, 内冷型, 楔形压紧	40
B2B3A Radial, Short, Coolant	41
短型横向左(反切右)刀夹, 内冷型	41
B2B3AK Coolant, Wedge Clamping	42
短型横向左(反切右)刀夹, 内冷型, 楔形压紧	42
B5AK Radial, Long, Coolant, Wedge Clamping Holders	43
长型横向右刀夹, 内冷型, 楔形压紧	43
B6AK Radial, Long, Coolant, Wedge Clamping Holders	44
长型横向左刀夹, 内冷型, 楔形压紧	44
B7AK Radial, Long, Coolant, Wedge Clamping Holders	45
长型横向反切右刀夹, 内冷型, 楔形压紧	45
C1C4A Axial, Coolant	46
纵向右(反切左)刀夹, 内冷型	46
C1C4AK Coolant, Wedge Clamping	47
纵向右(反切左)刀夹, 内冷型, 楔形压紧	47
C2C3A Axial, Coolant	48
纵向左(反切右)刀夹, 内冷型	48
C2C3AK Coolant, Wedge Clamping	49
纵向左(反切右)刀夹, 内冷型, 楔形压紧	49
D1D2A Rectangular Holder, Coolant	50
多座刀夹, 内冷型	50
ARALU Cuting Off Tool Holder, Coolant	51
短型横向切刀右(反切左)刀夹, 内冷型	51
ALARU Cuting Off Tool Holder, Coolant	52
短型横向切刀左(反切右)刀夹, 内冷型	52
Unterlegplatte	53
垫片	53

Radial Holder Form B1 Right, Short
短型横向右刀夹



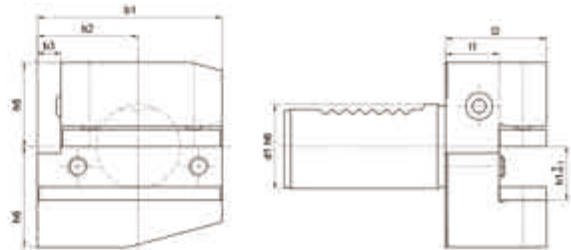
Metric

Size	d1	b1	b2	b3	h1	h5	h6	l1	l2
B1-16x12x24	16	42	23	5	12	20	22	13	24
B1-16x12x34	16	42	23	5	12	20	22	23	34
B1-20x16x30	20	55	30	7	16/12	25	30	16	30
B1-20x16x40	20	55	30	7	16/12	25	30	26	40
B1-25x16x30	25	55	30	7	16/12	25	30	16	30
B1-25x16x40	25	55	30	7	16/12	25	30	26	40
B1-30x20x40	30	70	35	10	20/16	28	38	22	40
B1-30x20x60	30	70	35	10	20/16	28	38	42	60
B1-40x25x44	40	85	42.5	12.5	25/20	32.5	48	22	44
B1-50x32x55	50	100	50	16	32/25	35	60	30	55
B1-60x32x60	60	125	62.5	16	32/25	42.5	62.5	30	60
B1-80x40x75	80	160	80	20	40/32	55	80	40	75

Inch

Size	d1	b1	b2	b3	h1	h5	h6	l1	l2
B1-20x5/8"x30	20	55	30	7	5/8"	25	30	16	30
B1-30x3/4"x40	30	70	35	10	3/4"	28	38	22	40
B1-40x1"x44	40	85	42.5	12.5	1"	32.5	48	22	44
B1-50x1-1/4"x55	50	100	50	16	1-1/4"	35	60	30	55
B1-60x1-1/4"x60	60	125	62.5	16	1-1/4"	42.5	62.5	30	60

Radial Holder Form B2 Left, Short
短型横向左刀夹



Metric

Size	d1	b1	b2	b3	h1	h5	h6	l1	l2
B2-16x12x24	16	42	23	5	12	20	22	13	24
B2-16x12x34	16	42	23	5	12	20	22	23	34
B2-20x16x30	20	55	30	7	16/12	25	30	16	30
B2-20x16x40	20	55	30	7	16/12	25	30	26	40
B2-25x16x30	25	55	30	7	16/12	25	30	16	30
B2-25x16x40	25	55	30	7	16/12	25	30	26	40
B2-30x20x40	30	70	35	10	20/16	28	38	22	40
B2-30x20x60	30	70	35	10	20/16	28	38	42	60
B2-40x25x44	40	85	42.5	12.5	25/20	32.5	48	22	44
B2-50x32x55	50	100	50	16	32/25	35	60	30	55
B2-60x32x60	60	125	62.5	16	32/25	42.5	62.5	30	60
B2-80x40x75	80	160	80	20	40/32	55	80	40	75

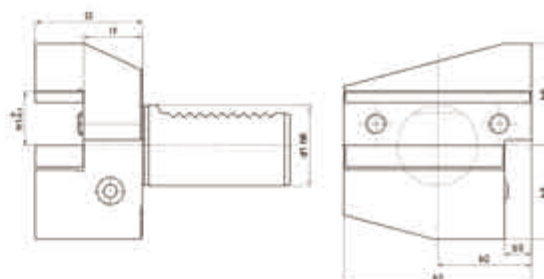
Inch

Size	d1	b1	b2	b3	h1	h5	h6	l1	l2
B2-20x5/8"x30	20	55	30	7	5/8"	25	30	16	30
B2-30x3/4"x40	30	70	35	10	3/4"	28	38	22	40
B2-30x3/4"x100	30	70	35	10	3/4"	28	38	42	100
B2-40x1"x44	40	85	42.5	12.5	1"	32.5	48	22	44
B2-50x1-1/4"x55	50	100	50	16	1-1/4"	35	60	30	55
B2-60x1-1/4"x60	60	125	62.5	16	1-1/4"	42.5	62.5	30	60

VDI

Radial Holder Form B3 Inverted Right, Short

短型横向反切右刀夹



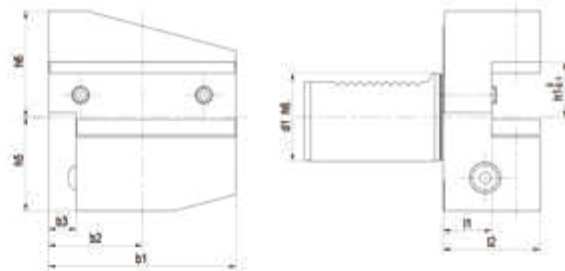
Metric

Size	d1	b1	b2	b3	h1	h5	h6	l1	l2
B3-16x12x24	16	42	23	5	12	20	22	13	24
B3-16x12x34	16	42	23	5	12	20	22	23	34
B3-20x16x30	20	55	30	7	16/12	25	30	16	30
B3-20x16x40	20	55	30	7	16/12	25	30	26	40
B3-25x16x30	25	55	30	7	16/12	25	30	16	30
B3-25x16x40	25	55	30	7	16/12	25	30	26	40
B3-30x20x40	30	70	35	10	20/16	35	38	22	40
B3-30x20x60	30	70	35	10	20/16	35	38	42	60
B3-40x25x44	40	85	42.5	12.5	25/20	42.5	48	22	44
B3-50x32x55	50	100	50	16	32/25	50	60	30	55
B3-60x32x60	60	125	62.5	16	32/25	62.5	62.5	30	60
B3-80x40x75	80	160	80	20	40/32	80	80	40	75

Inch

Size	d1	b1	b2	b3	h1	h5	h6	l1	l2
B3-20x5/8"x30	20	55	30	7	5/8"	25	30	16	30
B3-30x3/4"x40	30	70	35	10	3/4"	35	38	22	40
B3-40x1"x44	40	85	42.5	12.5	1"	42.5	48	22	44
B3-50x1-1/4"x55	50	100	50	16	1-1/4"	50	60	30	55
B3-60x1-1/4"x60	60	125	62.5	16	1-1/4"	62.5	62.5	30	60

Radial Holder Form B4 Inverted Left, Short
短型横向反切左刀夹



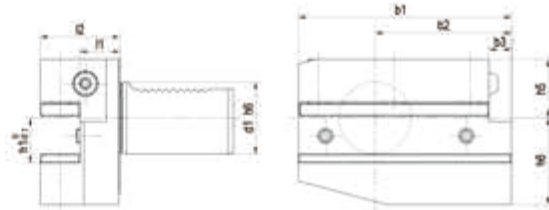
Metric

Size	d1	b1	b2	b3	h1	h5	h6	l1	l2
B4-16x12x24	16	42	23	5	12	20	22	13	24
B4-16x12x34	16	42	23	5	12	20	22	23	34
B4-20x16x30	20	55	30	7	16/12	25	30	16	30
B4-20x16x40	20	55	30	7	16/12	25	30	26	40
B4-25x16x30	25	55	30	7	16/12	25	30	16	30
B4-25x16x40	25	55	30	7	16/12	25	30	26	40
B4-30x20x40	30	70	35	10	20/16	35	38	22	40
B4-30x20x60	30	70	35	10	20/16	35	38	42	60
B4-40x25x44	40	85	42.5	12.5	25/20	42.5	48	22	44
B4-50x32x55	50	100	50	16	32/25	50	60	30	55
B4-60x32x60	60	125	62.5	16	32/25	62.5	62.5	30	60
B4-80x40x75	80	160	80	20	40/32	80	80	40	75

Inch

Size	d1	b1	b2	b3	h1	h5	h6	l1	l2
B4-20x5/8"x30	20	55	30	7	5/8"	25	30	16	30
B4-30x3/4"x40	30	70	35	10	3/4"	35	38	22	40
B4-40x1"x44	40	85	42.5	12.5	1"	42.5	48	22	44
B4-50x1-1/4"x55	50	100	50	16	1-1/4"	50	60	30	55
B4-60x1-1/4"x60	60	125	62.5	16	1-1/4"	62.5	62.5	30	60

Radial Holder Form B5 Right, Long
长型横向右刀夹



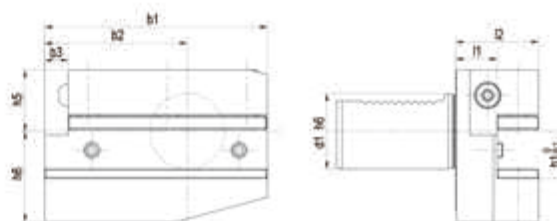
Metric

Size	d1	b1	b2	b3	h1	h5	h6	l1	l2
B5-16x12x24	16	58	39	5	12	20	22	13	24
B5-16x12x34	16	58	39	5	12	20	22	23	34
B5-20x16x30	20	75	50	7	16/12	25	30	16	30
B5-20x16x40	20	75	50	7	16/12	25	30	26	40
B5-25x16x30	25	75	50	7	16/12	25	30	16	30
B5-25x16x40	25	75	50	7	16/12	25	30	26	40
B5-30x20x40	30	100	65	10	20/16	28	38	22	40
B5-30x20x60	30	100	65	10	20/16	28	38	42	60
B5-40x25x44	40	118	75.5	12.5	25/20	32.5	48	22	44
B5-50x32x55	50	130	80	16	32/25	35	60	30	55
B5-60x32x60	60	145	82.5	16	32/25	42.5	62.5	30	60
B5-80x40x75	80	190	110	20	40/32	55	80	40	75

Inch

Size	d1	b1	b2	b3	h1	h5	h6	l1	l2
B5-20x5/8"x30	20	75	50	7	5/8"	25	30	16	30
B5-30x3/4"x40	30	100	65	10	3/4"	28	38	22	40
B5-40x1"x44	40	118	75.5	12.5	1"	32.5	48	22	44
B5-50x1-1/4"x55	50	130	80	16	1-1/4"	35	60	30	55
B5-60x1-1/4"x60	60	145	82.5	16	1-1/4"	42.5	62.5	30	60

Radial Holder Form B6 Left, Long
长型横向左刀夹



Metric

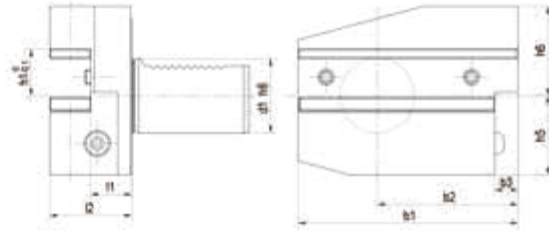
Size	d1	b1	b2	b3	h1	h5	h6	l1	l2
B6-16x12x24	16	58	39	5	12	20	22	13	24
B6-16x12x34	16	58	39	5	12	20	22	23	34
B6-20x16x30	20	75	50	7	16/12	25	30	16	30
B6-20x16x40	20	75	50	7	16/12	25	30	26	40
B6-25x16x30	25	75	50	7	16/12	25	30	16	30
B6-25x16x40	25	75	50	7	16/12	25	30	26	40
B6-30x20x40	30	100	65	10	20/16	28	38	22	40
B6-30x20x60	30	100	65	10	20/16	28	38	42	60
B6-40x25x44	40	118	75.5	12.5	25/20	32.5	48	22	44
B6-50x32x55	50	130	80	16	32/25	35	60	30	55
B6-60x32x60	60	145	82.5	16	32/25	42.5	62.5	30	60
B6-80x40x75	80	190	110	20	40/32	55	80	40	75

Inch

Size	d1	b1	b2	b3	h1	h5	h6	l1	l2
B6-20x5/8"x30	20	75	50	7	5/8"	25	30	16	30
B6-30x3/4"x40	30	100	65	10	3/4"	28	38	22	40
B6-40x1"x44	40	118	75.5	12.5	1"	32.5	48	22	44
B6-50x1-1/4"x55	50	130	80	16	1-1/4"	35	60	30	55
B6-60x1-1/4"x60	60	145	82.5	16	1-1/4"	42.5	62.5	30	60

VDI

Radial Holder Form B7 Inverted Right, Long
长型横向反切右刀夹



Metric

Size	d1	b1	b2	b3	h1	h5	h6	l1	l2
B7-16x12x24	16	58	39	5	12	20	22	13	24
B7-16x12x34	16	58	39	5	12	20	22	23	34
B7-20x16x30	20	75	50	7	16/12	25	30	16	30
B7-20x16x40	20	75	50	7	16/12	25	30	26	40
B7-25x16x30	25	75	50	7	16/12	25	30	16	30
B7-25x16x40	25	75	50	7	16/12	25	30	26	40
B7-30x20x40	30	100	65	10	20/16	35	38	22	40
B7-30x20x60	30	100	65	10	20/16	35	38	42	60
B7-40x25x44	40	118	75.5	12.5	25/20	42.5	48	22	44
B7-50x32x55	50	130	80	16	32/25	50	60	30	55
B7-60x32x60	60	145	82.5	16	32/25	62.5	62.5	30	60
B7-80x40x75	80	190	110	20	40/32	80	80	40	75

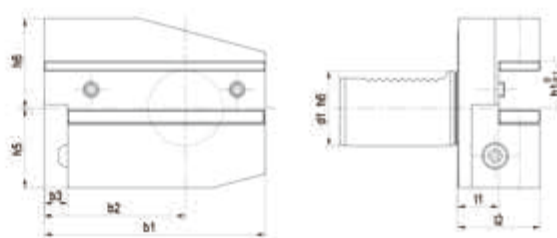
Inch

Size	d1	b1	b2	b3	h1	h5	h6	l1	l2
B7-20x5/8"x30	20	75	50	7	5/8"	25	30	16	30
B7-30x3/4"x40	30	100	65	10	3/4"	35	38	22	40
B7-40x1"x44	40	118	75.5	12.5	1"	42.5	48	22	44
B7-50x1-1/4" x55	50	130	80	16	1-1/4"	50	60	30	55
B7-60x1-1/4" x60	60	145	82.5	16	1-1/4"	62.5	62.5	30	60

VDI

Radial Holder Form B8 Inverted Left, Long

长型横向反切左刀夹



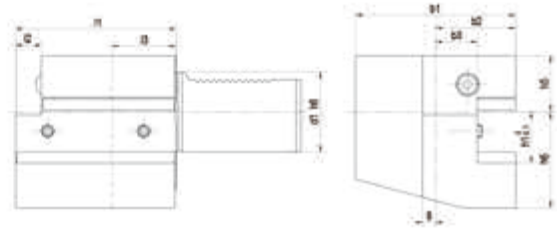
Metric

Size	d1	b1	b2	b3	h1	h5	h6	l1	l2
B8-16x12x24	16	58	39	5	12	20	22	13	24
B8-16x12x34	16	58	39	5	12	20	22	23	34
B8-20x16x30	20	75	50	7	16/12	25	30	16	30
B8-20x16x40	20	75	50	7	16/12	25	30	26	40
B8-25x16x30	25	75	50	7	16/12	25	30	16	30
B8-25x16x40	25	75	50	7	16/12	25	30	26	40
B8-30x20x40	30	100	65	10	20/16	35	38	22	40
B8-30x20x60	30	100	65	10	20/16	35	38	42	60
B8-40x25x44	40	118	75.5	12.5	25/20	42.5	48	22	44
B8-50x32x55	50	130	80	16	32/25	50	60	30	55
B8-60x32x60	60	145	82.5	16	32/25	62.5	62.5	30	60
B8-80x40x75	80	190	110	20	40/32	80	80	40	75

Inch

Size	d1	b1	b2	b3	h1	h5	h6	l1	l2
B8-20x5/8"x30	20	75	50	7	5/8"	25	30	16	30
B8-30x3/4"x40	30	100	65	10	3/4"	35	38	22	40
B8-40x1"x44	40	118	75.5	12.5	1"	42.5	48	22	44
B8-50x1-1/4" x55	50	130	80	16	1-1/4"	50	60	30	55
B8-60x1-1/4" x60	60	145	82.5	16	1-1/4"	62.5	62.5	30	60

Axial Holder Form C1 Right
纵向右刀夹



Metric

Size	d1	b1	b2	b3	h1	h5	h6	l1	l2	l3
C1-16x12x44	16	43	24	13	12	20	22	44	5	20
C1-20x16x50	20	65	40	26	16/12	25	30	50	-	30
C1-20x16x55	20	52	27	13	16/12	25	30	55	7	30
C1-25x16x55	25	58	33	19	16/12	25	30	55	7	20
C1-30x20x70	30	70	35	17	20/16	28	38	70	10	30
C1-40x25x85	40	85	42.5	21	25/20	32.5	48	85	12.5	30
C1-50x32x100	50	100	50	26	32/25	35	60	100	16	40
C1-60x32x125	60	125	62.5	33	32/25	42.5	62.5	125	16	40
C1-80x40x160	80	160	80	42	40/32	55	80	160	20	40

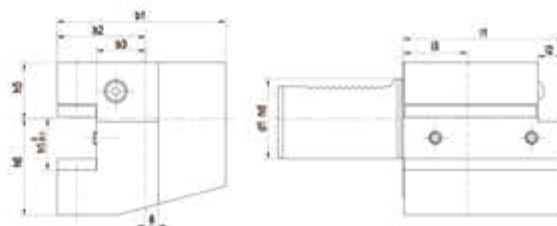
Inch

Size	d1	b1	b2	b3	h1	h5	h6	l1	l2	l3
C1-20x5/8"x50	20	65	40	26	5/8"	25	30	50	-	30
C1-30x3/4"x70	30	70	35	17	3/4"	28	38	70	10	30
C1-40x1"x85	40	85	42.5	21	1"	32.5	48	85	12.5	30
C1-50x1-1/4" x100	50	100	50	26	1-1/4"	35	60	100	16	40
C1-60x1-1/4" x125	60	125	62.5	33	1-1/4"	42.5	62.5	125	16	40

VDI

Axial Holder Form C2 Left

纵向左刀夹



Metric

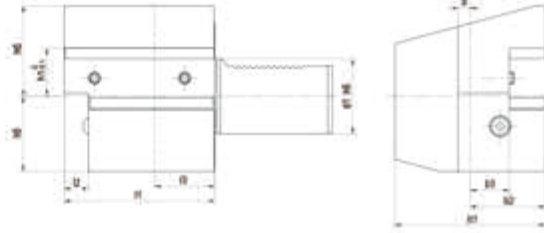
Size	d1	b1	b2	b3	h1	h5	h6	l1	l2	l3
C2-16x12x44	16	43	24	13	12	20	22	44	5	20
C2-20x16x50	20	65	40	26	16/12	25	30	50	-	30
C2-25x16x55	25	58	33	19	16/12	25	30	55	7	20
C2-30x20x70	30	76	41	23	20/16	28	38	70	10	30
C2-40x25x85	40	90	47.5	25.5	25/20	32.5	48	85	12.5	30
C2-50x32x100	50	105	55	30.5	32/25	35	60	100	16	40
C2-60x32x125	60	125	62.5	33	32/25	42.5	62.5	125	16	40
C2-80x40x160	80	160	78	42	40/32	55	80	160	20	40

Inch

Size	d1	b1	b2	b3	h1	h5	h6	l1	l2	l3
C2-20x5/8"x50	20	65	40	26	5/8"	25	30	50	-	30
C2-30x3/4"x70	30	76	41	23	3/4"	28	38	70	10	30
C2-40x1"x85	40	90	47.5	25.5	1"	32.5	48	85	12.5	30
C2-50x1-1/4" x100	50	105	55	30.5	1-1/4"	35	60	100	16	40
C2-60x1-1/4" x125	60	125	62.5	33	1-1/4"	42.5	62.5	125	16	40

VDI

Axial Holder Form C3 Inverted Right
纵向反切右刀夹



Metric

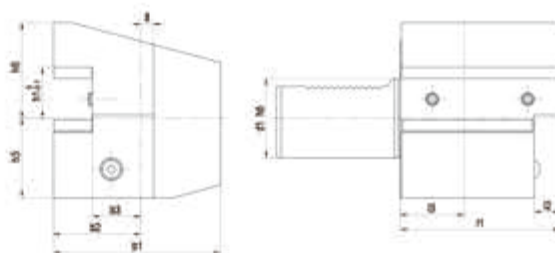
Size	d1	b1	b2	b3	h1	h5	h6	l1	l2	l3
C3-16x12x44	16	43	24	13	12	20	22	44	5	20
C3-20x16x50	20	65	40	26	16/12	25	30	50	-	30
C3-20x16x55	20	52	27	13	16/12	25	30	55	7	30
C3-25x16x55	25	58	33	19	16/12	25	30	55	7	20
C3-30x20x70	30	70	35	17	20/16	35	38	70	10	30
C3-40x25x85	40	85	42.5	21	25/20	42.5	48	85	12.5	30
C3-50x32x100	50	100	50	26	32/25	50	60	100	16	40
C3-60x32x125	60	125	62.5	33	32/25	62.5	62.5	125	16	40
C3-80x40x160	80	160	80	42	40/32	80	80	160	20	40

Inch

Size	d1	b1	b2	b3	h1	h5	h6	l1	l2	l3
C3-20x5/8"x50	20	65	40	26	5/8"	25	30	50	-	30
C3-30x3/4"x70	30	70	35	17	3/4"	35	38	70	10	30
C3-40x1"x85	40	85	42.5	21	1"	42.5	48	85	12.5	30
C3-50x1-1/4"x100	50	100	50	26	1-1/4"	50	60	100	16	40
C3-60x1-1/4"x125	60	125	62.5	33	1-1/4"	62.5	62.5	125	16	40

Axial Holder Form C4 Inverted Left

纵向反切左刀夹



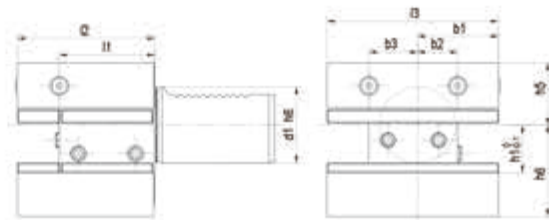
Metric

Size	d1	b1	b2	b3	h1	h5	h6	l1	l2	l3
C4-16x12x44	16	43	24	13	12	20	22	44	5	20
C4-20x16x50	20	65	40	26	16/12	25	30	50	-	30
C4-25x16x55	25	58	33	19	16/12	25	30	55	7	20
C4-30x20x70	30	76	41	23	20/16	35	38	70	10	30
C4-40x25x85	40	90	47.5	25.5	25/20	42.5	48	85	12.5	30
C4-50x32x100	50	105	55	30.5	32/25	50	60	100	16	40
C4-60x32x125	60	125	62.5	33	32/25	62.5	62.5	125	16	40
C4-80x40x160	80	160	78	42	40/32	80	80	160	20	40

Inch

Size	d1	b1	b2	b3	h1	h5	h6	l1	l2	l3
C4-20x5/8"x50	20	65	40	26	5/8"	25	30	50	-	30
C4-30x3/4"x70	30	76	41	23	3/4"	35	38	70	10	30
C4-40x1"x85	40	90	47.5	25.5	1"	42.5	48	85	12.5	30
C4-50x1-1/4"x100	50	105	55	30.5	1-1/4"	50	60	100	16	40
C4-60x1-1/4"x125	60	125	62.5	33	1-1/4"	62.5	62.5	125	16	40

Rectangular Holder with Multiple Seats Form D1
多座刀夹



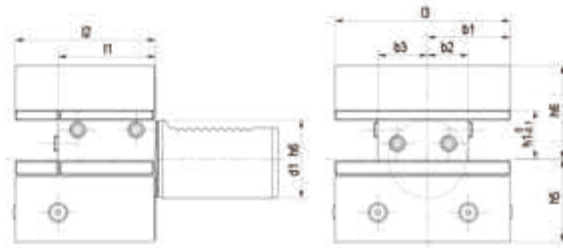
Metric

Size	d1	b1	b2	b3	h1	h5	h6	l1	l2	l3
D1-25x16x48	25	33	19	19	16/12	25	30	34	48	66
D1-30x20x60	30	35	17	23	20/16	28	38	42	60	76
D1-40x25x72	40	42.5	21	25.5	25/20	32.5	48	50	72	90
D1-50x32x85	50	50	26	30.5	32/25	35	60	60	85	105
D1-60x32x110	60	57.5	33	33	32/25	42.5	62.5	85	110	115
D1-80x40x140	80	76	42	42	40/32	55	80	105	140	152

Inch

Size	d1	b1	b2	b3	h1	h5	h6	l1	l2	l3
D1-30x3/4"x60	30	35	17	23	3/4"	28	38	42	60	76
D1-40x1"x72	40	42.5	21	25.5	1"	32.5	48	50	72	90
D1-50x1-1/4" x85	50	50	26	30.5	1-1/4"	35	60	60	85	105
D1-60x1-1/4" x110	60	57.5	33	33	1-1/4"	42.5	62.5	85	110	115

Rectangular Holder with Multiple Seats Form D2 Inverted
多座反切刀夹



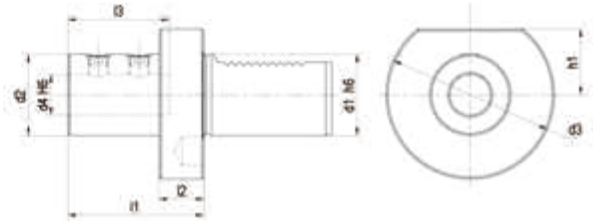
Metric

Size	d1	b1	b2	b3	h1	h5	h6	l1	l2	l3
D2-25x16x48	25	33	19	19	16/12	25	30	34	48	66
D2-30x20x60	30	35	17	23	20/16	35	38	42	60	76
D2-40x25x72	40	42.5	21	25.5	25/20	42.5	48	50	72	90
D2-50x32x85	50	50	26	30.5	32/25	50	60	60	85	105
D2-60x32x110	60	57.5	33	33	32/25	62.5	62.5	85	110	115
D2-80x40x140	80	76	42	42	40/32	80	80	105	140	152

Inch

Size	d1	b1	b2	b3	h1	h5	h6	l1	l2	l3
D2-30x3/4"x60	30	35	17	23	3/4"	35	38	42	60	76
D2-40x1"x72	40	42.5	21	25.5	1"	42.5	48	50	72	90
D2-50x1-1/4" x85	50	50	26	30.5	1-1/4"	50	60	60	85	105
D2-60x1-1/4" x110	60	57.5	33	33	1-1/4"	62.5	62.5	85	110	115

Boring Holder for Indexable Insert Drill Form E1
可转位浅孔钻刀夹

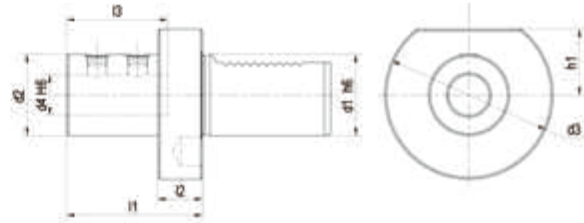


Metric

Size	d1	d2	d3	d4	h1	l1	l2	l3
E1-20x16	20	36	50	16	-	67	18	54
E1-20x20	20	40	50	20	-	67	18	54
E1-20x25	20	45	50	25	-	71	18	59
E1-25x16	25	36	58	16	28	67	18	54
E1-25x20	25	40	58	20	28	67	18	54
E1-25x25	25	45	58	25	28	71	18	59
E1-25x32	25	52	58	32	28	75	18	63
E1-30x16	30	36	68	16	28	67		54
E1-30x20	30	40	68	20	28	67	22	54
E1-30x25	30	45	68	25	28	71	22	59
E1-30x32	30	52	68	32	28	75	22	63
E1-30x40	30	65	68	40	28	90	22	73
							22	
E1-40x16	40	36	83	16	32.5	67		54
E1-40x20	40	40	83	20	32.5	67	22	54
E1-40x25	40	45	83	25	32.5	75	22	59
E1-40x32	40	52	83	32	32.5	75	22	63
E1-40x40	40	65	83	40	32.5	90	22	73
E1-40x50	40	75	83	50	32.5	100	22	83

VDI

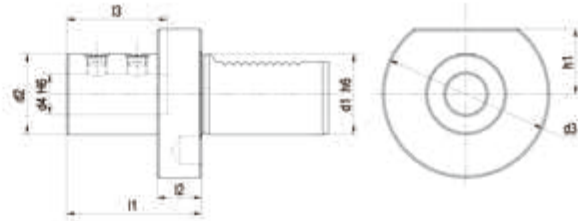
Boring Holder for Indexable Insert Drill Form E1
可转位浅孔钻刀夹



Metric

Size	d1	d2	d3	d4	h1	l1	l2	l3
E1-50x16	50	36	98	16	35	80	30	54
E1-50x20	50	40	98	20	35	67	30	54
E1-50x25	50	45	98	25	35	80	30	59
E1-50x32	50	52	98	32	35	80	30	63
E1-50x40	50	65	98	40	35	90	30	73
E1-50x50	50	75	98	50	35	100	30	83
E1-60x16	60	36	123	16	42.5	80	30	54
E1-60x20	60	40	123	20	42.5	80	30	54
E1-60x25	60	45	123	25	42.5	80	30	59
E1-60x32	60	52	123	32	42.5	80	30	63
E1-60x40	60	65	123	40	42.5	90	30	73
E1-60x50	60	75	123	50	42.5	100	30	83
E1-80x20	80	40	158	20	55	80	30	54
E1-80x25	80	45	158	25	55	80	30	59
E1-80x32	80	52	158	32	55	80	30	63
E1-80x40	80	65	158	40	55	90	30	73
E1-80x50	80	75	158	50	55	100	30	83

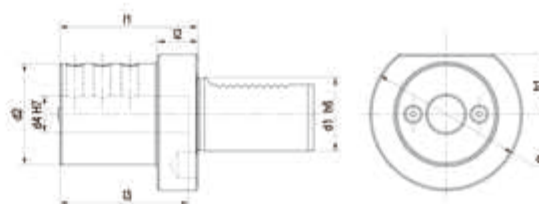
Boring Holder for Indexable Insert Drill Form E1
可转位浅孔钻刀夹



Inch

Size	d1	d2	d3	d4	h1	l1	l2	l3
E1-20x3/4"	20	40	50	3/4"	23	67	18	54
E1-20x1"	20	45	50	1"	23	71	18	59
E1-30x3/4"	30	40	68	3/4"	28	67	22	54
E1-30x1"	30	45	68	1"	28	71	22	59
E1-30x1-1/4"	30	52	68	1-1/4"	28	75	22	63
E1-40x5/8"	40	36	83	5/8"	32.5	67	22	54
E1-40x3/4"	40	40	83	3/4"	32.5	67	22	54
E1-40x1"	40	45	83	1"	32.5	75	22	59
E1-40x1-1/4"	40	52	83	1-1/4"	32.5	75	22	63
E1-40x1-1/2"	40	65	83	1-1/2"	32.5	90	22	73
E1-50x3/4"	50	40	98	3/4"	35	67	30	54
E1-50x1"	50	45	98	1"	35	80	30	59
E1-50x1-1/4"	50	52	98	1-1/4"	35	80	30	63
E1-50x1-1/2"	50	65	98	1-1/2"	35	90	30	73
E1-50x2"	50	75	98	2"	35	100	30	83

Boring Holder Form E2
镗孔刀夹

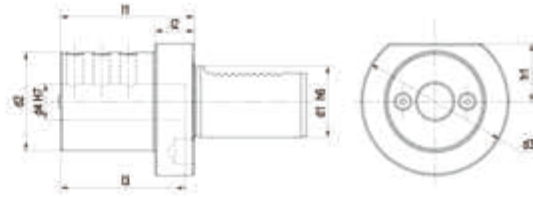


Metric

Size	d1	d2	d3	d4	h1	l1	l2	l3
E2-16x6	16	32	40	6	18	44	13	34
E2-16x8	16	32	40	8	18	44	13	34
E2-16x10	16	32	40	10	18	44	13	34
E2-16x12	16	40	40	12	18	44	13	34
E2-16x16	16	40	40	16	18	44	13	34
E2-20x6	20	40	50	6	23	50	18	42
E2-20x8	20	40	50	8	23	50	18	42
E2-20x10	20	40	50	10	23	50	18	42
E2-20x12	20	40	50	12	23	50	18	42
E2-20x16	20	40	50	16	23	50	18	42
E2-20x20	20	45	50	20	23	50	18	41
E2-20x25	20	50	50	25	23	60	18	51
E2-25x8	25	40	58	8	25	50	18	41
E2-25x10	25	40	58	10	25	50	18	41
E2-25x12	25	40	58	12	25	50	18	41
E2-25x16	25	40	58	16	25	50	18	41
E2-25x20	25	58	58	20	25	50	18	41
E2-25x25	25	58	58	25	25	60	18	51
E2-25x32	25	58	58	32	25	75	18	62

VDI

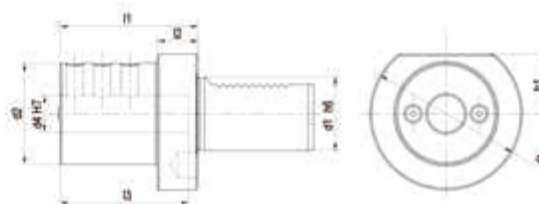
Boring Holder Form E2
镗孔刀夹



Metric

Size	d1	d2	d3	d4	h1	l1	l2	l3
E2-30x6	30	55	68	6	28	60	22	43
E2-30x8	30	55	68	8	28	60	22	43
E2-30x10	30	55	68	10	28	60	22	43
E2-30x12	30	55	68	12	28	60	22	43
E2-30x16	30	55	68	16	28	60	22	54
E2-30x20	30	55	68	20	28	60	22	54
E2-30x25	30	55	68	25	28	60	22	54
E2-30x30	30	66	68	30	28	75	22	61
E2-30x32	30	68	68	32	28	75	22	61
E2-40x8	40	55	83	8	32.5	75	22	43
E2-40x10	40	55	83	10	32.5	75	22	43
E2-40x12	40	55	83	12	32.5	75	22	58
E2-40x16	40	55	83	16	32.5	75	22	61
E2-40x20	40	55	83	20	32.5	75	22	61
E2-40x25	40	55	83	25	32.5	75	22	61
E2-40x30	40	83	83	30	32.5	75	22	61
E2-40x32	40	83	83	32	32.5	75	22	61
E2-40x40	40	83	83	40	32.5	90	22	76
E2-50x12	50	62	98	12	35	90	30	71
E2-50x16	50	62	98	16	35	90	30	76
E2-50x20	50	68	98	20	35	90	30	76
E2-50x25	50	68	98	25	35	90	30	76
E2-50x30	50	68	98	30	35	90	30	76
E2-50x32	50	68	98	32	35	90	30	76
E2-50x40	50	80	98	40	35	90	30	76
E2-50x50	50	98	98	50	35	100	30	86

Boring Holder Form E2
镗孔刀夹

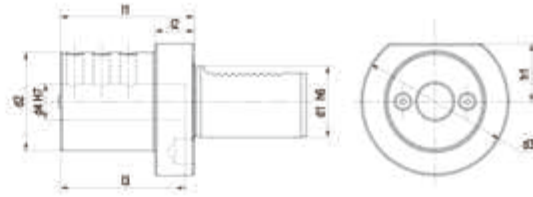


Metric

Size	d1	d2	d3	d4	h1	l1	l2	l3
E2-60x16	60	68	123	16	42.5	90	30	76
E2-60x20	60	68	123	20	42.5	90	30	76
E2-60x25	60	68	123	25	42.5	90	30	76
E2-60x30	60	68	123	30	42.5	90	30	76
E2-60x32	60	68	123	32	42.5	90	30	76
E2-60x40	60	98	123	40	42.5	90	30	76
E2-60x50	60	98	123	50	42.5	100	30	86
E2-80x20	80	68	158	20	55	100	30	86
E2-80x25	80	68	158	25	55	100	30	86
E2-80x32	80	68	158	32	55	100	30	86
E2-80x40	80	98	158	40	55	100	30	86
E2-80x50	80	98	158	50	55	100	30	86
E2-80x60	80	98	158	60	55	100	30	92

VDI

Boring Holder Form E2
镗孔刀夹

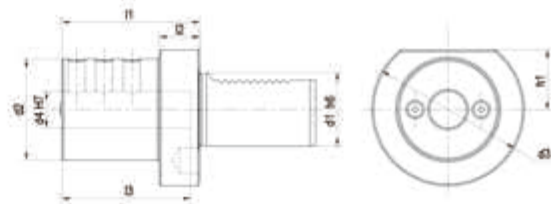


Inch

Size	d1	d2	d3	d4	h1	l1	l2	l3
E2-20x5/16"	20	40	50	5/16"	23	50	18	42
E2-20x3/8"	20	40	50	3/8"	23	50	18	42
E2-20x1/2"	20	40	50	1/2"	23	50	18	42
E2-20x5/8"	20	40	50	5/8"	23	50	18	42
E2-20x3/4"	20	45	50	3/4"	23	50	18	41
E2-20x1"	20	50	50	1"	23	60	18	51
E2-30x5/16"	30	55	68	5/16"	28	60	22	43
E2-30x3/8"	30	55	68	3/8"	28	60	22	43
E2-30x1/2"	30	55	68	1/2"	28	60	22	43
E2-30x5/8"	30	55	68	5/8"	28	60	22	54
E2-30x3/4"	30	55	68	3/4"	28	60	22	54
E2-30x1"	30	55	68	1"	28	60	22	54
E2-30x1-1/4"	30	68	68	1-1/4"	28	75	22	61
E2-40x3/8"	40	55	83	3/8"	32.5	75	22	43
E2-40x1/2"	40	55	83	1/2"	32.5	75	22	58
E2-40x5/8"	40	55	83	5/8"	32.5	75	22	61
E2-40x3/4"	40	55	83	3/4"	32.5	75	22	61
E2-40x1"	40	55	83	1"	32.5	75	22	61
E2-40x1-1/4"	40	83	83	1-1/4"	32.5	75	22	61
E2-40x1-1/2"	40	83	83	1-1/2"	32.5	90	22	76

VDI

Boring Holder Form E2
镗孔刀夹



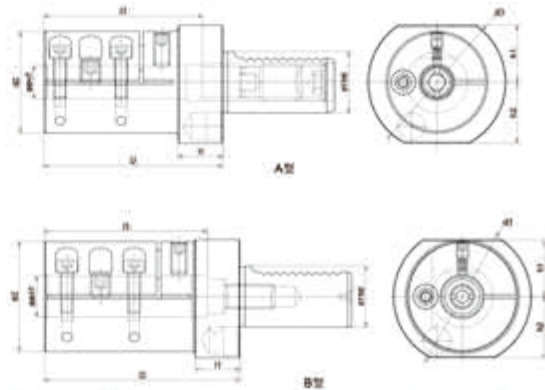
Inch

Size	d1	d2	d3	d4	h1	l1	l2	l3
E2-50x1/2"	50	62	98	1/2"	35	90	30	71
E2-50x5/8"	50	62	98	5/8"	35	90	30	76
E2-50x3/4"	50	68	98	3/4"	35	90	30	76
E2-50x1"	50	68	98	1"	35	90	30	76
E2-50x1-1/4"	50	68	98	1-1/4"	35	90	30	76
E2-50x1-1/2"	50	80	98	1-1/2"	35	90	30	76
E2-50x2"	50	98	98	2"	35	100	30	86
E2-60x5/8"	60	68	123	5/8"	42.5	90	30	76
E2-60x3/4"	60	68	123	3/4"	42.5	90	30	76
E2-60x1"	60	68	123	1"	42.5	90	30	76
E2-60x1-1/4"	60	68	123	1-1/4"	42.5	90	30	76
E2-60x1-1/2"	60	98	123	1-1/2"	42.5	90	30	76
E2-60x2"	60	98	123	2"	42.5	100	30	86

VDI

Boring Bar Holder Form E2S

镗孔刀夹，开槽型

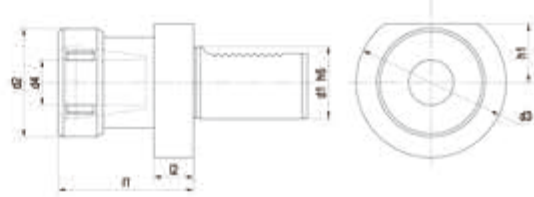


Inch

Size	d1	d2	d3	d4	h1	h2	l1	l2	l3	T
E2S-30x6	30	32	68	6	28		75	22	65	A
E2S-30x8	30	34	68	8	28		75	22	65	A
E2S-30x10	30	38	68	10	28		75	22	65	A
E2S-30x12	30	38	68	12	28		75	22	65	A
E2S-30x16	30	50	68	16	28	30	22	88	78	A
E2S-30x20	30	54	68	20	28	30	22	96	80	B
E2S-30x25	30	57	68	25	28	30	22	112	100	B
E2S-30x32	30	65	68	32	28	30	22	142	128	B
E2S-30x40	30	65	68	40	28		75	22	67	B
E2S-40x6	40	32	83	6	32.5		75	22	65	A
E2S-40x8	40	34	83	8	32.5		75	22	65	A
E2S-40x10	40	38	83	10	32.5		75	22	65	A
E2S-40x12	40	38	83	12	32.5		75	22	65	A
E2S-40x16	40	50	83	16	32.5	-	22	88	78	A
E2S-40x20	40	54	83	20	32.5	-	22	96	80	A
E2S-40x25	40	58	83	25	32.5	-	22	112	100	B
E2S-40x32	40	63	83	32	32.5	-	22	142	128	B
E2S-40x40	40	73	83	40	32.5	-	22	174	150	B
E2S-50x16	50	50	98	16	35	-	30	103	93	A
E2S-50x20	50	54	98	20	35	-	30	103	93	A
E2S-50x25	50	59	98	25	35	-	30	120	108	A
E2S-50x32	50	65	98	32	35	-	30	150	128	B
E2S-50x40	50	73	98	40	35	-	30	182	160	B
E2S-50x50	50	83	98	50	35	-	30	182	160	B
E2S-60x25	60	59	123	25	42.5	-	30	120	108	A
E2S-60x32	60	56	123	32	42.5	-	30	150	138	A
E2S-60x40	60	73	123	40	42.5	-	30	182	160	B
E2S-60x50	60	83	123	50	42.5	-	30	202	180	B
E2S-60x60	60	96	123	60	42.5	-	30	202	180	B

VDI

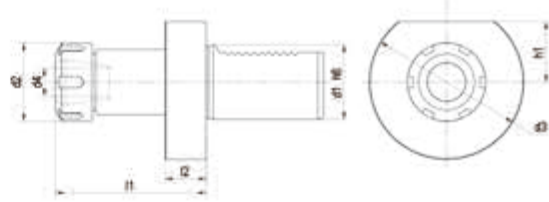
OZ Collet Chuck Form E3
OZ 夹头刀柄



Size	Description	d1	d2	d3	d4	h1	l1	l2
E3-16x16	VDI16-OZ16-57	16	43	40	2-16	18	65	13
E3-20x16	VDI20-OZ16-57	20	43	50	2-16	23	57	18
E3-20x20	VDI20-OZ20-62	20	52	50	2-20	23	62	18
E3-25x16	VDI25-OZ16-57	25	43	58	2-16	25	57	18
E3-25x20	VDI25-OZ20-62	25	52	58	2-20	25	62	18
E3-30x16	VDI30-OZ16-57	30	43	68	2-16	28	57	22
E3-30x20	VDI30-OZ20-62	30	52	68	2-20	28	62	22
E3-30x25	VDI30-OZ25-75	30	60	68	2-25	28	75	22
E3-30x32	VDI30-OZ32-90	30	72	68	4-32	28	90	22
E3-40x16	VDI40-OZ16-57	40	43	83	2-16	32.5	57	22
E3-40x20	VDI40-OZ20-62	40	52	83	2-20	32.5	62	22
E3-40x25	VDI40-OZ25-75	40	60	83	2-25	32.5	75	22
E3-40x32	VDI40-OZ32-90	40	72	83	4-32	32.5	90	22
E3-50x20	VDI50-OZ20-70	50	52	98	2-20	35	70	30
E3-50x25	VDI50-OZ25-75	50	60	98	2-25	35	75	30
E3-50x32	VDI50-OZ32-90	50	72	98	4-32	35	90	30
E3-60x25	VDI60-OZ25-75	60	60	123	2-25	42.5	75	30
E3-60x32	VDI60-OZ32-90	60	72	123	4-32	42.5	90	30
E3-80x25	VDI80-OZ25-85	80	60	158	2-25	55	85	40
E3-80x32	VDI80-OZ32-95	80	72	158	4-32	55	95	40

VDI

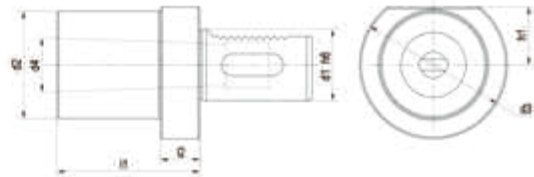
ER Collet Chuck Form E4
ER 夹头刀柄



Size	Description	d1	d2	d3	d4	h1	l1	l2
E4-16x16	VDI16-ER16-44	16	32	40	1-10	18	44	13
E4-16x20	VDI16-ER20-44	16	35	40	1-13	18	44	13
E4-20x16	VDI20-ER16-44	20	32	50	1-10	23	44	18
E4-20x20	VDI20-ER20-50	20	35	50	1-13	23	50	18
E4-20x25	VDI20-ER25-50	20	42	50	2-16	23	50	18
E4-20x32	VDI20-ER32-62	20	50	50	2-20	23	62	18
E4-25x16	VDI25-ER16-44	25	32	58	1-10	25	44	18
E4-25x25	VDI25-ER25-57	25	42	58	2-16	25	57	18
E4-25x32	VDI25-ER32-62	25	50	58	2-20	25	62	18
E4-30x16	VDI30-ER16-48	30	32	68	1-10	28	48	22
E4-30x20	VDI30-ER20-59	30	35	68	1-13	28	59	22
E4-30x25	VDI30-ER25-57	30	42	68	2-16	28	57	22
E4-30x32	VDI30-ER32-75	30	50	68	2-20	28	75	22
E4-30x40	VDI30-ER40-80	30	63	68	3-26	28	80	22
E4-40x20	VDI40-ER20-59	40	35	83	1-13	32.5	59	22
E4-40x25	VDI40-ER25-57	40	42	83	2-16	32.5	57	22
E4-40x32	VDI40-ER32-75	40	50	83	2-20	32.5	75	22
E4-40x40	VDI40-ER40-75	40	63	83	3-26	32.5	75	22
E4-50x25	VDI50-ER25-67	50	42	98	2-16	35	67	30
E4-50x32	VDI50-ER32-75	50	50	98	2-20	35	75	30
E4-50x40	VDI50-ER40-75	50	63	98	3-26	35	75	30
E4-60x32	VDI60-ER32-75	60	50	123	2-20	42.5	75	30
E4-60x40	VDI60-ER40-75	60	63	123	3-26	42.5	75	30
E4-80x40	VDI80-ER40-75	80	63	158	3-26	55	75	40

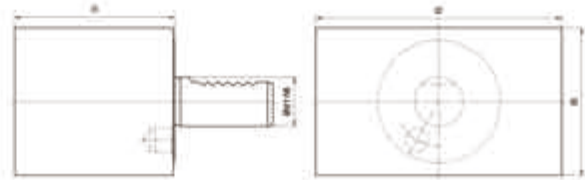
VDI

Morse Taper Adapter Form F
带扁尾莫氏刀柄



Size	d1	d2	d3	MK	d4	h1	l1	l2
F30-MKD1	30	-	68	1	12.065	28	27	-
F30-MKD2	30	53	68	2	17.78	28	36	27
F30-MKD3	30	53	68	3	23.825	28	66	41
F40-MKD1	40	55	83	1	12.065	32.5	36	22
F40-MKD2	40	55	83	2	17.78	32.5	36	22
F40-MKD3	40	58	83	3	23.825	32.5	36	22
F40-MKD4	40	68	83	4	31.267	32.5	80	22
F50-MKD2	50	55	98	2	17.78	35	36	30
F50-MKD3	50	58	98	3	23.825	35	45	30
F50-MKD4	50	68	98	4	31.267	35	55	30
F50-MKD5	50	-	98	5	44.399	35	168	-
F60-MKD2	60	55	123	2	17.78	42.5	35	30
F60-MKD3	60	58	123	3	23.825	42.5	45	30
F60-MKD4	60	68	123	4	31.267	42.5	55	30
F60-MKD5	60	98	123	5	44.399	42.5	64	30

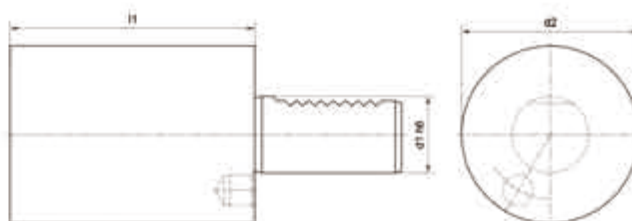
Rectangular Soft Blank Form A1
方形基础柄



Size	d1	l1	l2	l3
A1-16x44	16	44	78	44
A1-20x65	20	65	100	60
A1-25x75	25	75	100	60
A1-30x85	30	85	130	76
A1-40x100	40	100	151	96
A1-50x125	50	125	160	120
A1-60x160	60	160	165	125
A1-80x200	80	200	220	160

Round Soft Blank Form A2

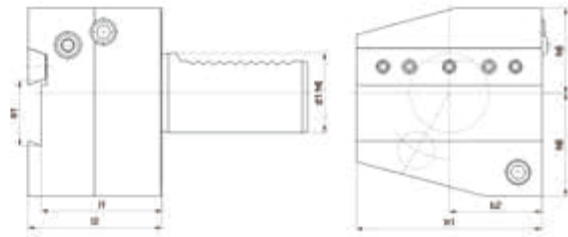
圆形基础柄



Size	d1	d2	l1
A2-16x60	16	40	60
A2-20x70	20	50	70
A2-25x80	25	58	80
A2-25x200	25	58	200
A2-30x100	30	68	100
A2-30x240	30	68	240
A2-40x120	40	83	120
A2-40x320	40	83	320
A2-50x135	50	98	135
A2-50x400	50	98	400
A2-60x150	60	123	150
A2-60x480	60	123	480
A2-80x500	80	158	500

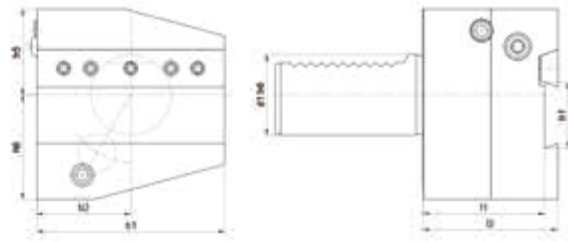
VDI

Cutting Off Tool Holder Right Height Adjustable
短型横向切刀右刀夹



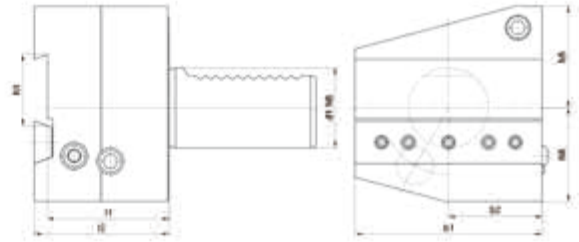
Size	d1	b1	b2	h1	h5	h6	l1	l2
AR2026	20	60	30	26	28	36	44	50
AR2526	25	60	30	26	28	36	44	50
AR3026	30	70	35	26	32	39	44	50
AR4026	40	85	42.5	26	43	41.5	44	50
AR4032	40	85	42.5	32	43	41.5	44	50
AR5026	50	100	50	26	43	45	44	50
AR5032	50	100	50	32	43	45	44	50
AR6032	60	125	62.5	32	48	55	44	50

Cutting Off Tool Holder Left Height Adjustable
短型横向切刀左刀夹



Size	d1	b1	b2	h1	h5	h6	l1	l2
AL2026	20	60	30	26	28	36	44	50
AL2526	25	60	30	26	32	36	44	50
AL3026	30	70	35	26	32	39	44	50
AL4026	40	85	42.5	26	43	41.5	44	50
AL4032	40	85	42.5	32	43	41.5	44	50
AL5026	50	100	50	26	43	45	44	50
AL5032	50	100	50	32	43	45	44	50
AL6032	60	125	62.5	32	48	55	44	50

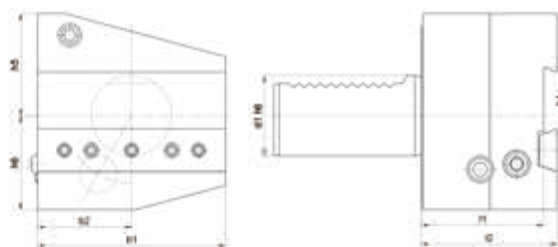
Cuting Off Tool Holder Inverted Right Height Adjustable
短型横向切刀反切右刀夹



Size	d1	b1	b2	h1	h5	h6	l1	l2
ARU2526	25	60	30	26	36	28	44	50
ARU3026	30	70	35	26	38	35	44	50
ARU4026	40	85	42.5	26	43	41.5	44	50
ARU4032	40	85	42.5	32	43	41.5	44	50
ARU5026	50	100	50	26	43	45	44	50
ARU5032	50	100	50	32	43	45	44	50
ARU6032	60	125	62.5	32	48	55	44	50

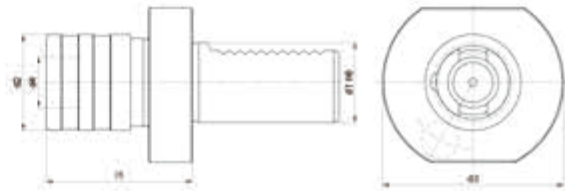
Cuting Off Tool Holder Inverted Left Height Adjustable

短型横向切刀反切左刀夹



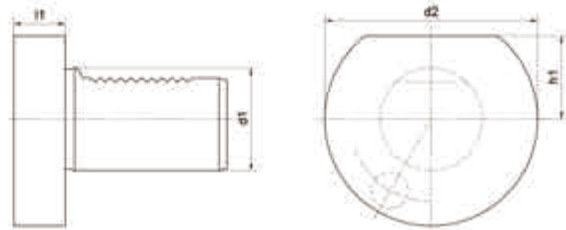
Size	d1	b1	b2	h1	h5	h6	l1	l2
ALU2526	25	60	30	26	36	28	44	50
ALU3026	30	70	35	26	38	35	44	50
ALU4026	40	85	42.5	26	43	41.5	44	50
ALU4032	40	85	42.5	32	43	41.5	44	50
ALU5026	50	100	50	26	43	45	44	50
ALU5032	50	100	50	32	43	45	44	50
ALU6032	60	125	62.5	32	48	55	44	50

Quick Change Tapping Chuck with Length Compensation
弹性快换攻丝刀柄



Size	Collet Size	d1	d2	d3	d4	l1
VDI20-TC312-55	1	20	38	50	19	55
VDI30-TC312-55	1	30	38	68	19	55
VDI30-TC820-77	2	30	55	68	31	77
VDI40-TC312-55	1	40	38	83	19	55
VDI40-TC820-77	2	40	55	83	31	77
VDI40-TC1433-110	3	40	79	83	48	110
VDI50-TC312-55	1	50	38	98	19	55
VDI50-TC820-77	2	50	55	98	31	77
VDI50-TC1433-110	3	50	79	98	48	110

Protection Plug Form Z2
保护塞



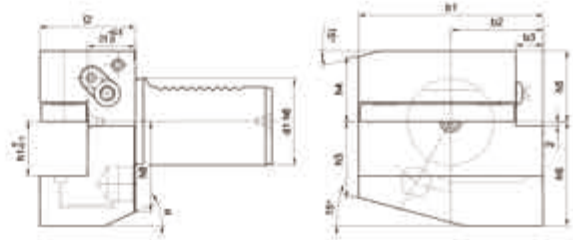
Steel Plug

Size	d1	d2	h1	l1
Z2-16x13S	16	40	18	13
Z2-20x16S	20	50	23	16
Z2-25x16S	25	58	25	16
Z2-30x16S	30	68	28	16
Z2-40x20S	40	83	32.5	20
Z2-50x20S	50	98	35	20
Z2-60x20S	60	123	42.5	20

Plastic Plug

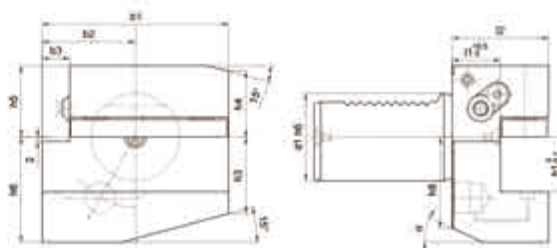
Size	d1	d2	h1	l1
Z2-16x13P	16	40	18	13
Z2-20x16P	20	50	23	16
Z2-25x16P	25	58	25	16
Z2-30x16P	30	68	28	16
Z2-40x20P	40	83	32.5	20
Z2-50x20P	50	98	35	20
Z2-60x20P	60	123	42.5	20

B1A Radial, Short, Coolant
短型横向右刀夹, 内冷型



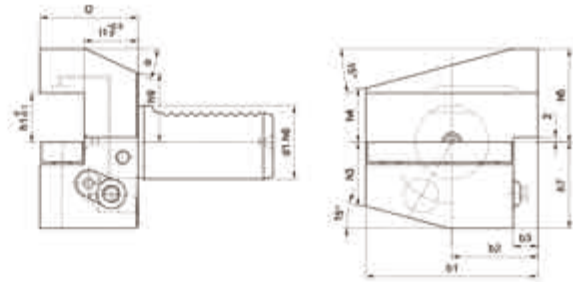
Size	b1	b2	b3	l1	h3	h4	h5	h6	h8	α
B1A-161234	42	23	5	23	15	15	20	22	19	30°
B1A-201640	55	30	7	26	19	19	25	30	23	30°
B1A-252040	70	35	10	22	29.5	22	31.5	38.5	30	25°
B1A-302040	70	35	10	22	26	22	28	38	30	25°
B1A-402544	85	42.5	12.5	22	35	30	32.5	48	-	-
B1A-502544	85	42.5	12.5	22	35	30	32.5	48	-	-

B2A Radial, Short, Coolant
短型横向左刀夹, 内冷型



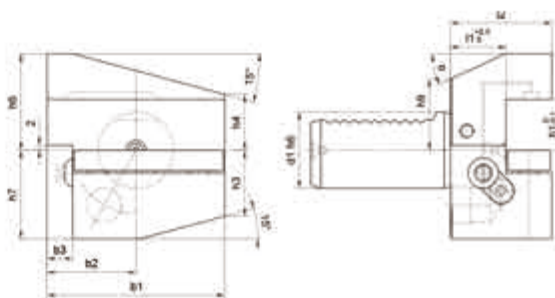
Size	b1	b2	b3	l1	h3	h4	h5	h6	h8	α
B2A-161234	42	23	5	23	15	15	20	22	19	30°
B2A-201640	55	30	7	26	19	19	25	30	23	30°
B2A-252040	70	35	10	22	29.5	22	31.5	38.5	30	25°
B2A-302040	70	35	10	22	26	22	28	38	30	25°
B2A-402544	85	42.5	12.5	22	35	30	32.5	48	-	-
B2A-502544	85	42.5	12.5	22	35	30	32.5	48	-	-

B3A Radial, Short, Coolant
短型横向反切右刀夹，内冷型



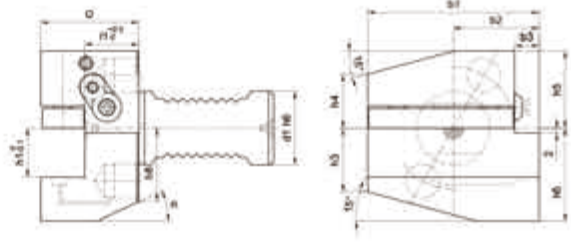
Size	b1	b2	b3	l1	h3	h4	h6	h7	h9	α
B3A-161234	42	23	5	23	15	15	22	20	19	30°
B3A-201640	55	30	7	26	19	19	30	25	23	30°
B3A-302040	70	35	10	22	26	22	38	35	28	25°
B3A-402544	85	42.5	12.5	22	35	30	48	42.5	-	-
B3A-502544	85	42.5	12.5	22	35	30	48	42.5	-	-

B4A Radial, Short, Coolant
短型横向反切左刀夹，内冷型



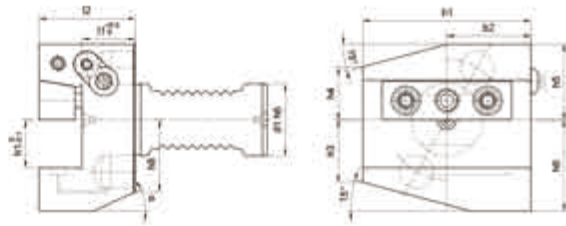
Size	b1	b2	b3	l1	h3	h4	h6	h7	h9	a
B4A-161234	42	23	5	23	15	15	22	20	19	30°
B4A-201640	55	30	7	26	19	19	30	25	23	30°
B4A-302040	70	35	10	22	26	22	38	35	28	25°
B4A-402544	85	32.5	12.5	22	35	30	48	42.5	-	-
B4A-502544	85	32.5	12.5	22	35	30	48	42.5	-	-

B1B4A Radial, Short, Coolant
短型横向右 (反切左) 刀夹, 内冷型



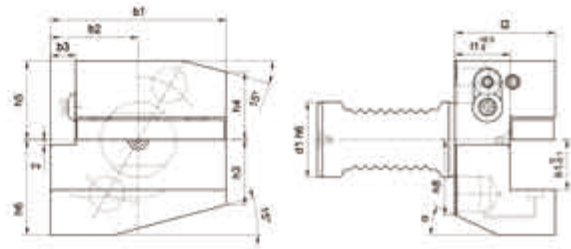
Size	b1	b2	b3	l1	h3	h4	h5	h6	h8	α
B1B4A-302040	70	35	10	22	29.5	22	31.5	41.5	30	25°
B1B4A-402544	85	42.5	12.5	22	35	30	38	48	-	-
B1B4A-502544	85	42.5	12.5	22	43	30	43	48	-	-

B1B4AK Radial, Short, Coolant, Wedge Clamping Holders
 短型横向右 (反切左) 刀夹, 内冷型, 楔形压紧



Size	b1	b2	b3	l1	h3	h4	h5	h6	h8	a
B1B4AK-302040	70	35	-	22	29.5	22	31.5	41.5	30	25°
B1B4AK-402544	85	42.5	-	22	35	30	38	48	-	-
B1B4AK-502544	85	42.5	-	22	43	30	43	48	-	-

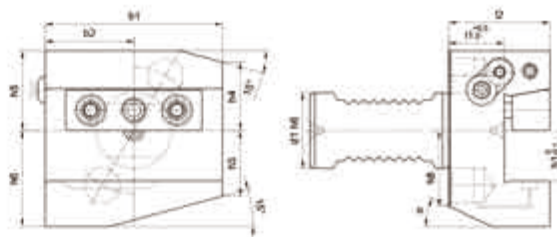
B2B3A Radial, Short, Coolant
短型横向左(反切右)刀夹, 内冷型



Size	b1	b2	b3	l1	h3	h4	h5	h6	h8	α
B2B3A-302040	70	35	10	22	29.5	27	31.5	41.5	30	25°
B2B3A-402544	85	42.5	12.5	22	35	30	38	48	-	-
B2B3A-502544	85	42.5	12.5	22	35	38	43	48	-	-

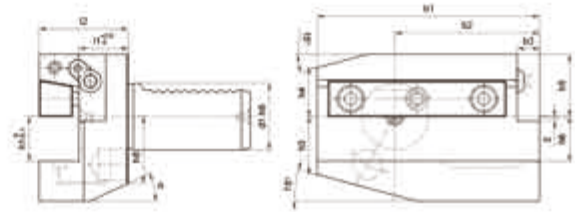
B2B3AK Radial, Short, Coolant, Wedge Clamping Holders

短型横向左 (反切右) 刀夹, 内冷型, 楔形压紧



Size	b1	b2	b3	l1	h3	h4	h5	h6	h8	a
B2B3AK-302040	70	35	-	22	29.5	27	31.5	41.5	30	25°
B2B3AK-402544	85	42.5	-	22	35	30	38	48	-	-
B2B3AK-502544	85	42.5	-	22	35	38	43	48	-	-

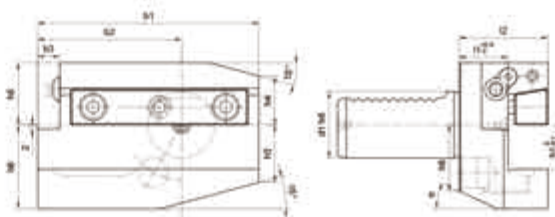
B5AK Radial, Long, Coolant, Wedge Clamping Holders
 长型横向右刀夹, 内冷型, 楔形压紧



Size	b1	b2	b3	l1	h3	h4	h5	h6	h8	α
B5AK-302040	100	65	10	22	26	22	28	38	30	25°
B5AK-402544	118	75.5	12.5	22	35	30	32.5	48	-	-
B5AK-503255	130	80	16	30	42	35	35	60	-	-
B5AK-603260	145	82.5	16	30	46	42.5	42.5	62.5	-	-

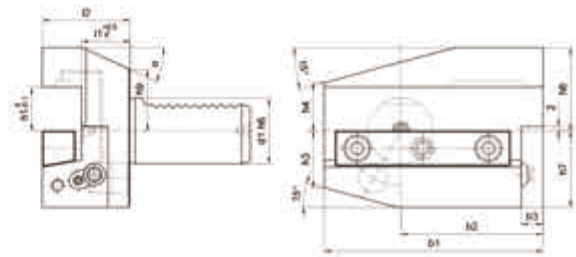
B6AK Radial, Long, Coolant, Wedge Clamping Holders

长型横向左刀夹，内冷型，楔形压紧



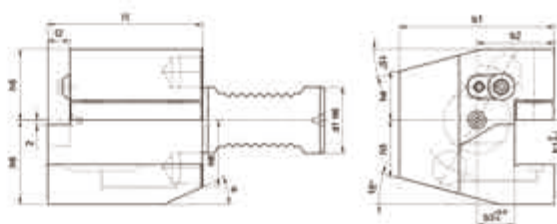
Size	b1	b2	b3	l1	h3	h4	h5	h6	h8	α
B6AK-302040	100	65	10	22	26	22	28	38	30	25°
B6AK-402544	118	75.5	12.5	22	35	30	32.5	48	-	-
B6AK-503255	130	80	16	30	42	35	35	60	-	-
B6AK-603260	145	82.5	16	30	46	42.5	42.5	62.5	-	-

B7AK Radial, Long, Coolant, Wedge Clamping Holders
 长型横向反切右刀夹, 内冷型, 楔形压紧



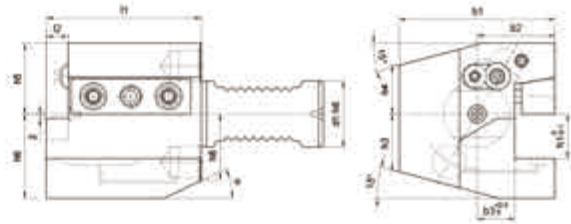
Size	b1	b2	b3	l1	h3	h4	h6	h7	h9	α
B7AK-302040	100	65	10	22	26	22	38	35	28°	25°
B7AK-402544	118	75.5	12.5	22	35	30	48	42.5	-	-
B7AK-503255	130	80	16	30	42	35	60	50	-	-
B7AK-603260	145	82.5	16	30	46	42.5	62.5	62.5	-	-

C1C4A Axial, Coolant
 纵向右 (反切左) 刀夹, 内冷型



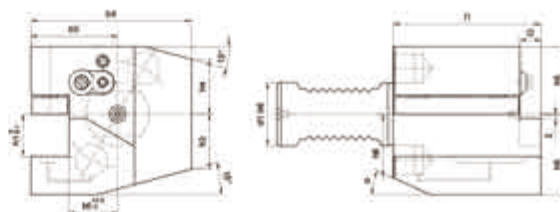
Size	b1	b2	b3	l2	h3	h4	h5	h6	h8	α
C1C4A-161244	43	24	13	5	15	15	20	22	19	5
C1C4A-201655	52	27	13	7	19	19	25	30	23	7
C1C4A-252025	58	33	15	7	26	28	30	36	26	15°
C1C4A-302070	70	35	17	10	26	22	32	38	30	25°
C1C4A-402585	85	42.5	21	12.5	35	30	38	48	40	15°
C1C4A-502585	90.5	48	26	12.5	42	35	44	48	-	-

C1C4AK Axial, Coolant, Wedge Clamping Holders
 纵向右 (反切左) 刀夹, 内冷型, 楔形压紧



Size	b1	b2	b3	l2	h3	h4	h5	h6	h8	α
C1C4AK-302070	70	35	17	10	26	22	32	38	30	25°
C1C4AK-402585	85	42.5	21	12.5	35	30	38	48	40	15°
C1C4AK-502585	90.5	48	26	12.5	42	35	44	48	-	-

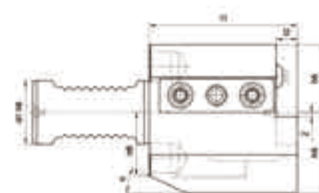
C2C3A Axial, Coolant
纵向左 (反切右) 刀夹, 内冷型



Size	b4	b5	b6	l2	h3	h4	h5	h6	h8	α
C2C3A-161244	43	24	13	5	15	15	20	22	19	30°
C2C3A-201655	58	33	19	7	19	19	25	30	23	30°
C2C3A-252055	62	37	19	7	38	28	30	36	26	15°
C2C3A-302070	76	41	23	10	26	26	32	38	30	25°
C2C3A-402585	90	47.5	25.5	12.5	35	30	38	48	40	15°
C2C3A-502585	95	52.5	30.5	12.5	42	37	44	48	-	-

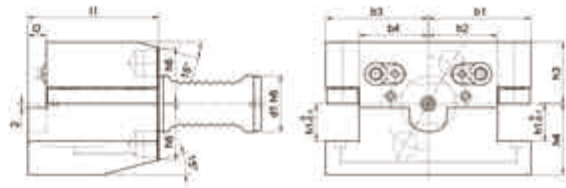
C2C3AK Axial, Coolant, Wedge Clamping Holders

纵向左 (反切右) 刀夹, 内冷型, 楔形压紧



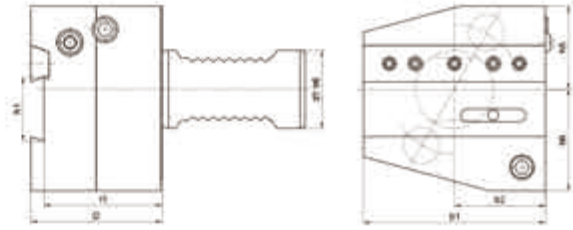
Size	b4	b5	b6	l2	h3	h4	h5	h6	h8	α
C2C3AK-302070	76	41	23	10	26	26	32	38	30	25°
C2C3AK-402585	90	47.5	25.5	12.5	35	30	38	48	40	15°
C2C3AK-502585	65	52.5	30.5	12.5	42	37	44	48	-	-

D1D2A Rectangular Holder, Coolant
 多座刀夹，内冷型



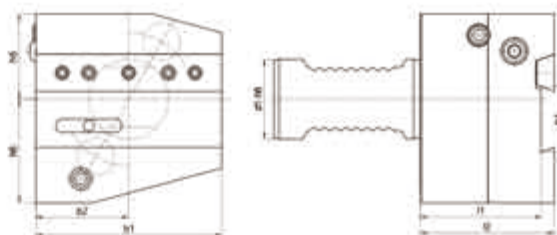
Size	b1	b2	b3	b4	h3	h4	h6	l2	α
D1D2A-252055	37	19	37	19	28	38	28	7	15°
D1D2A-302070	55	37	55	37	33	38	30	10	15°
D1D2A-402585	65	43	65	43	43.5	48	37	12.5	15°

ARALU Cutting Off Tool Holder, Coolant
短型横向切刀右 (反切左) 刀夹, 内冷型



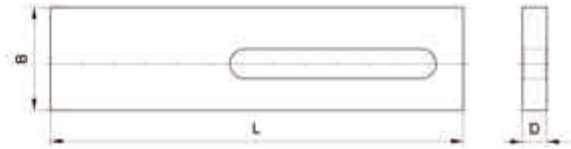
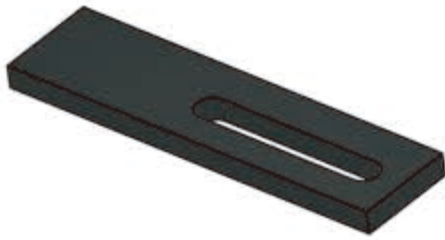
Size	l1	l2	b1	b2	h5	h6
ARALUA-2526	44	50	60	30	28	36
ARALUA-3026	44	50	70	35	32	37
ARALUA-3032	44	50	85	42.5	32	40
ARALUA-4026	44	50	85	42.5	43	40
ARALUA-4032	44	50	85	42.5	43	40
ARALUA-5032	44	50	100	50	43	45

ALARU Cutting Off Tool Holder, Coolant
短型横向切刀左 (反切右) 刀夹, 内冷型



Size	l1	l2	b1	b2	h5	h6
ALARUA-2526	44	50	60	30	28	36
ALARUA-3026	44	50	70	35	32	37
ALARUA-3032	44	50	85	42.5	32	40
ALARUA-4026	44	50	85	42.5	43	40
ALARUA-4032	44	50	85	42.5	43	40
ALARUA-5032	44	50	100	50	43	45

Unterlegplatte
垫片



Size	L	B	D
36x10x4	36	10	4
47x13x5	47	13	5
59x17x8	59	17	8
71.5x21x8	71.5	21	8